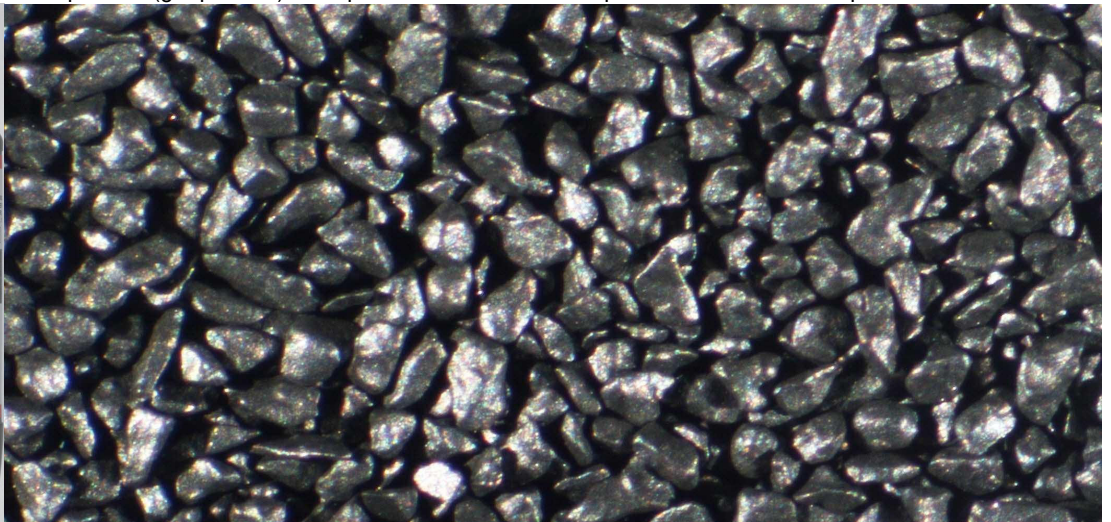
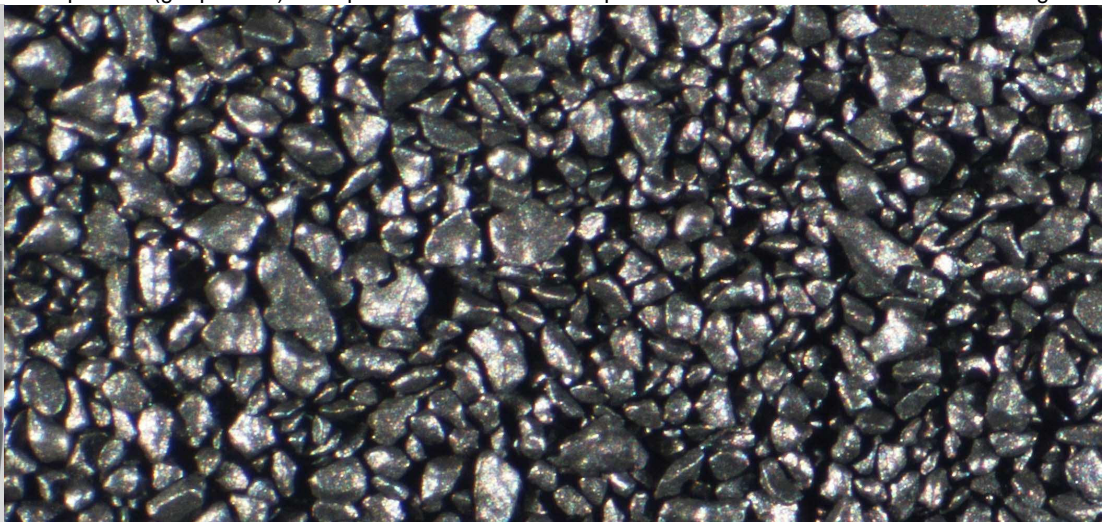


Vesuvit LC1 Black powder (gunpowder) for replicas and historical weapons. Most suitable for pistols.



Vesuvit LC2 Black powder (gunpowder) for replicas and historical weapons. Most suitable for muskets and shotguns.



Vesuvit LC Black powder (gunpowder) for replicas and historical weapons. Most suitable for muskets and shotguns.

Catalogue of Black Powders 2016

VESUVIT[®]



DATA FOR BLACK POWDERS

Kentucky Pistol (calibre .50)								
Barrel Length: 254 mm / 10.0"			Bullet: 12.5 mm / 0.49"			Patch: 0.33 mm Irish linen		
			Type: Hornady Round Ball			Primer Cap: 4.7 SB		
Twist: 422 mm / 16.6"			Bullet Weight: 11.40 g / 176 grs			Lube: No. 55		
VESUVIT LC 1								
Powder Charge			Muzzle Velocity		Velocity on 50 yards		Muzzle Energy	Energy on 50 yards
Type	Grams	Grains	m/s	FPS	m/s	FPS	kJ	kJ
20FFFFg	1.34	20.7	195	640	180	590	217	185
30FFFFg	2.00	30.9	220	720	205	670	276	240
40FFFFg	2.67	41.2	270	890	260	850	416	385
VESUVIT LC 2								
Powder Charge			Muzzle Velocity		Velocity on 50 yards		Muzzle Energy	Energy on 50 yards
Type	Grams	Grains	m/s	FPS	m/s	FPS	kJ	kJ
20FFFg	1.34	20.7	170	560	155	510	165	137
30FFFg	2.00	30.9	210	690	195	640	251	217
40FFFg	2.67	41.2	260	850	250	820	385	356
VESUVIT LC								
Powder Charge			Muzzle Velocity		Velocity on 50 yards		Muzzle Energy	Energy on 50 yards
Type	Grams	Grains	m/s	FPS	m/s	FPS	kJ	kJ
15FFFg	1.05	16.2	130	430	120	390	96	82
25FFFg	1.87	28.9	170	560	160	530	165	146
35FFFg	2.30	35.5	230	750	210	690	302	251

DATA FOR BLACK POWDERS

1858 2-Band Enfield Navy Rifle (calibre .58)

Barrel Length: 830 mm / 32.7"	Bullet: 14.65 mm / 0.58"	Patch: None
	Type: Lyman Minie Mould / No. 577611	Primer Cap: Musket Cap
Twist: 1220 mm / 48.0"	Bullet Weight: 34.34 g / 530 grs	Lube: No. 103

VESUVIT LC 1

Powder Charge			Muzzle Velocity		Velocity on 50 yards		Muzzle Energy	Energy on 50 yards
Type	Grams	Grains	m/s	FPS	m/s	FPS	kJ	kJ
40FFFFg	2.67	41.2	280	920	275	900	1350	1300
50FFFFg	3.43	52.9	320	1050	315	1030	1760	1700
60FFFFg	4.21	65.0	345	1130	340	1120	2050	1980

VESUVIT LC 2

Powder Charge			Muzzle Velocity		Velocity on 50 yards		Muzzle Energy	Energy on 50 yards
Type	Grams	Grains	m/s	FPS	m/s	FPS	kJ	kJ
40FFFg	2.67	41.2	270	890	265	870	1250	1200
50FFFg	3.43	52.9	305	1000	300	990	1600	1550
60FFFg	4.21	65.0	335	1100	330	1080	1930	1870

VESUVIT LC

Powder Charge			Muzzle Velocity		Velocity on 50 yards		Muzzle Energy	Energy on 50 yards
Type	Grams	Grains	m/s	FPS	m/s	FPS	kJ	kJ
40FFFg	2.67	41.2	245	800	240	790	1030	990
50FFFg	3.43	52.9	285	930	280	920	1400	1350
60FFFg	4.21	65.0	320	1050	315	1030	1760	1700

CAUTION !

After powder leaves our plant, we have no control over improper storage, handling, loading or using or on the condition of firearms or component use. For these reasons we make **no warranty** of merchantability or fitness for a particular use.

Loading should only be undertaken by someone familiar with these procedures. You should study **Catalogue of Black Powders**, which you can download from www.explosia.cz.

DANGER !

KEEP AWAY FROM HEAT, FLAME AND SPARKS. AVOID IMPACT AND FRICTION. STORE IN A COOL, DRY PLACE. KEEP OUT OF REACH OF CHILDREN.

DO NOT MIX POWDERS OF DIFFERENT KINDS. CHECK THE POWDER MEASURE EACH TIME IT IS USED. CLEAN UP SPILLED POWDER WITH A BRUSH AND DUSTPAN, DO NOT USE A VACUUM CLEANER. PREVENT CONTACT WITH FOOD, CHEWING AND SMOKING MATERIAL. USE ADEQUATE VENTILATION DURING HANDLING.

FIRST AID MEASURES

In all cases keep the victim at physical and psychic rest and keep warm. Never give anything to an unconscious person. In heavier cases, always after contact with eyes and if swallowed, seek medical advice.

Following inhalation: Break off the exposition. Move the victim to fresh air (not on the sun). If not breathing, give artificial respiration.

Following skin contact: Remove contaminated clothing. Wash affected area with water and soap and use skin protective cream.

Following eye contact: Rinse with water for at least 15 minutes. Move to the physician, while continue rinsing.

Following ingestion: Rinse mouth out with clean water, give 0,5 l water to drink, do not induce vomiting, and seek medical advice.

Most important symptoms and effects, both acute and delayed: May cause irritation of skin in case of repeated or prolonged exposure.

PRODUCER

Explosia, a. s.

Semtín 107, 530 02 Pardubice, Czech Republic

phone: + 420 466 825 500

fax: + 420 466 822 966

e-mail: explosia@explosia.cz

Sales department - Propellants

phone: + 420 466 825 287

+ 420 466 825 288

fax: + 420 466 822 943

e-mail: propellants@explosia.cz



www.explosia.cz

© Explosia, a. s.

This guide is available online on www.explosia.cz (section Products/Reloading)

Version 2016-03-01. All rights reserved. Specifications in this Propellants Catalog are subject to change without notice.